

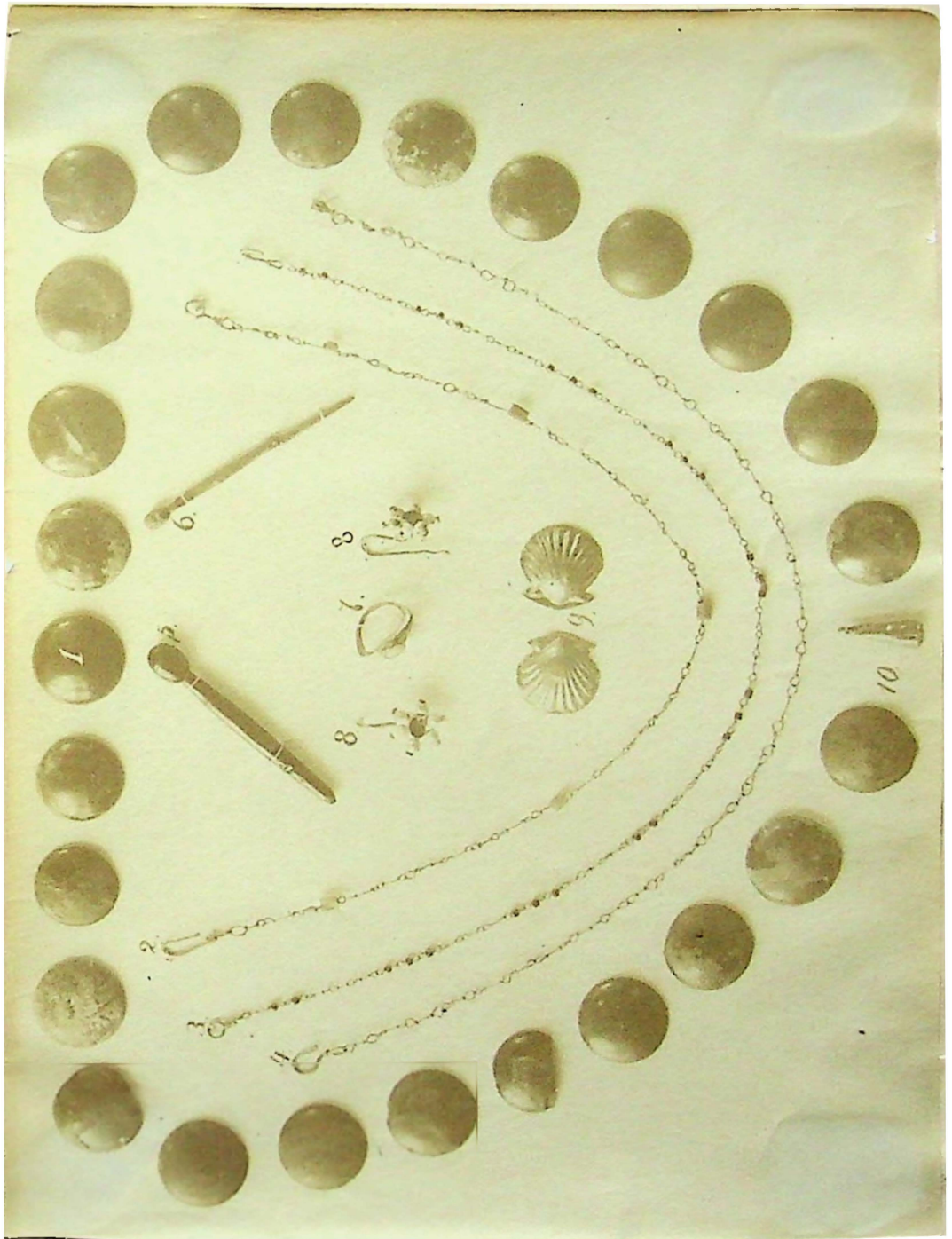


1674

1674

D
D
V B V S
AD V E S C E N T I B
V A L E R I A E
A N N O X V I I I E T
A T I V A L E R I A E
C O N I V C I E I V S
A N N O X V I I I
O C T A V I A Q V I E T A
G E N E R O E T
F I L I A E

Tavola II.



Fotog.

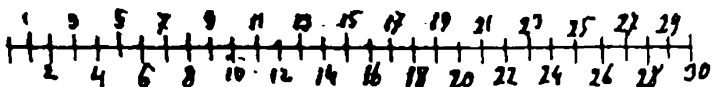
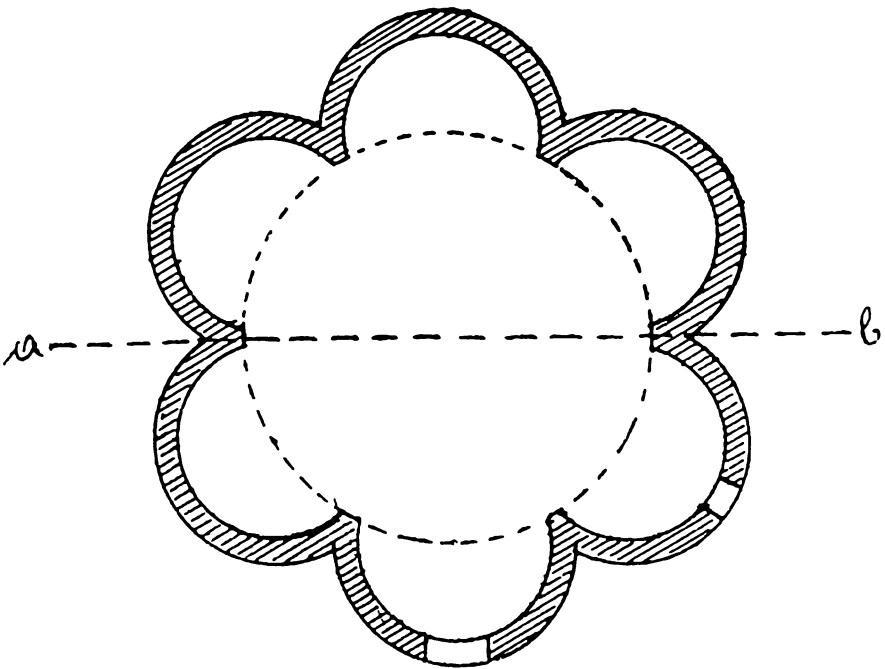
Goldstein

Spalato.

Tab. III

Edicola della S. Trinità alle
Paludi di Spalato.

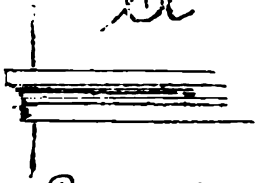
Pianta



Piedi di Vienna

Tav. IV.

A.



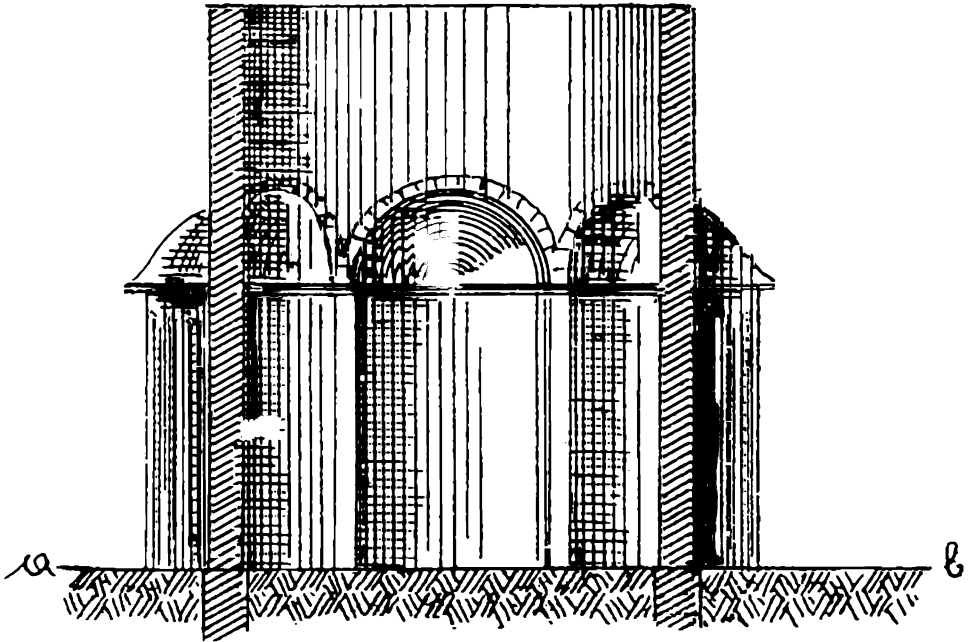
Cornice

B.

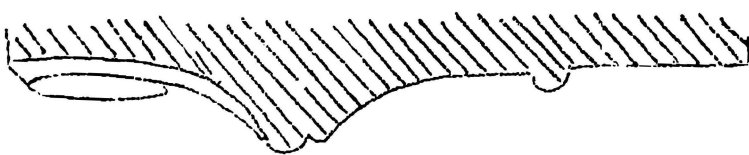


Fregio dell'architruave
della porta d'ingresso

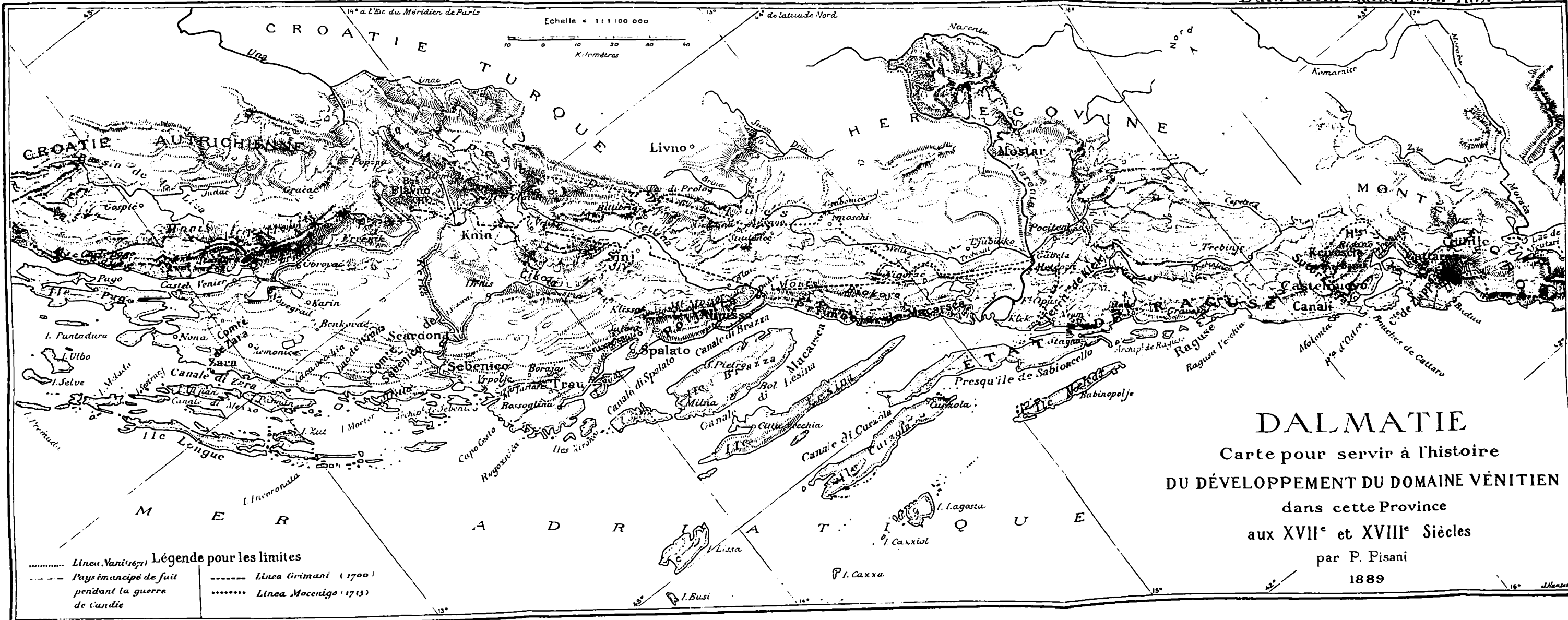
Spaccato.



Tab. V



2½ mouje



DALMATIE
 Carte pour servir à l'histoire
 DU DÉVELOPPEMENT DU DOMAINE VÉNITIEN
 dans cette Province
 aux XVII^e et XVIII^e Siècles
 par P. Pisani
 1889

Légende pour les limites

- Linea Nani (1671)
- Pays émancipé de suite pendant la guerre de Candie
- Linea Grimani (1700)
- Linea Mocenigo (1713)